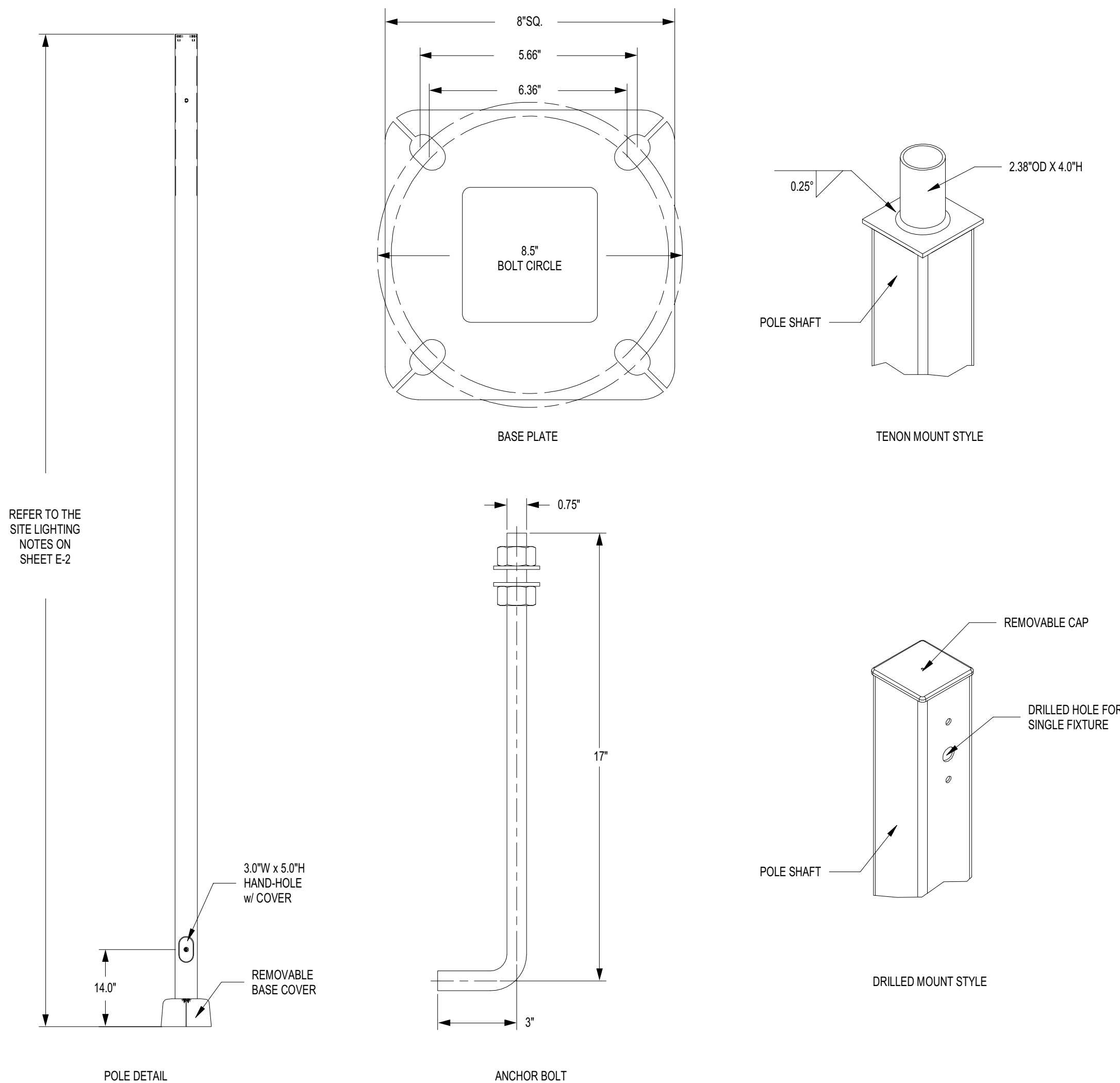
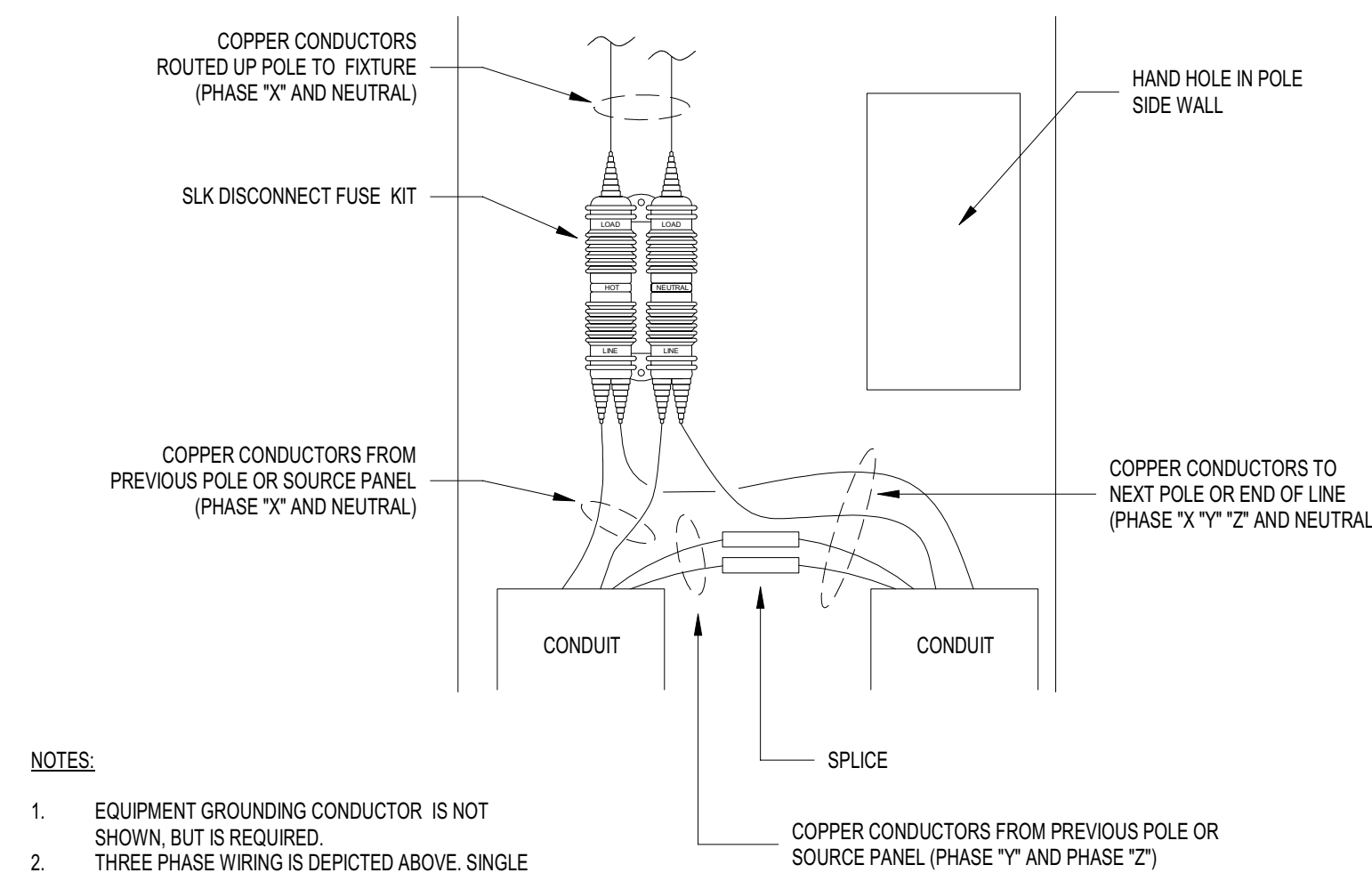


1 LIGHT POLE BASE DETAIL
NTS

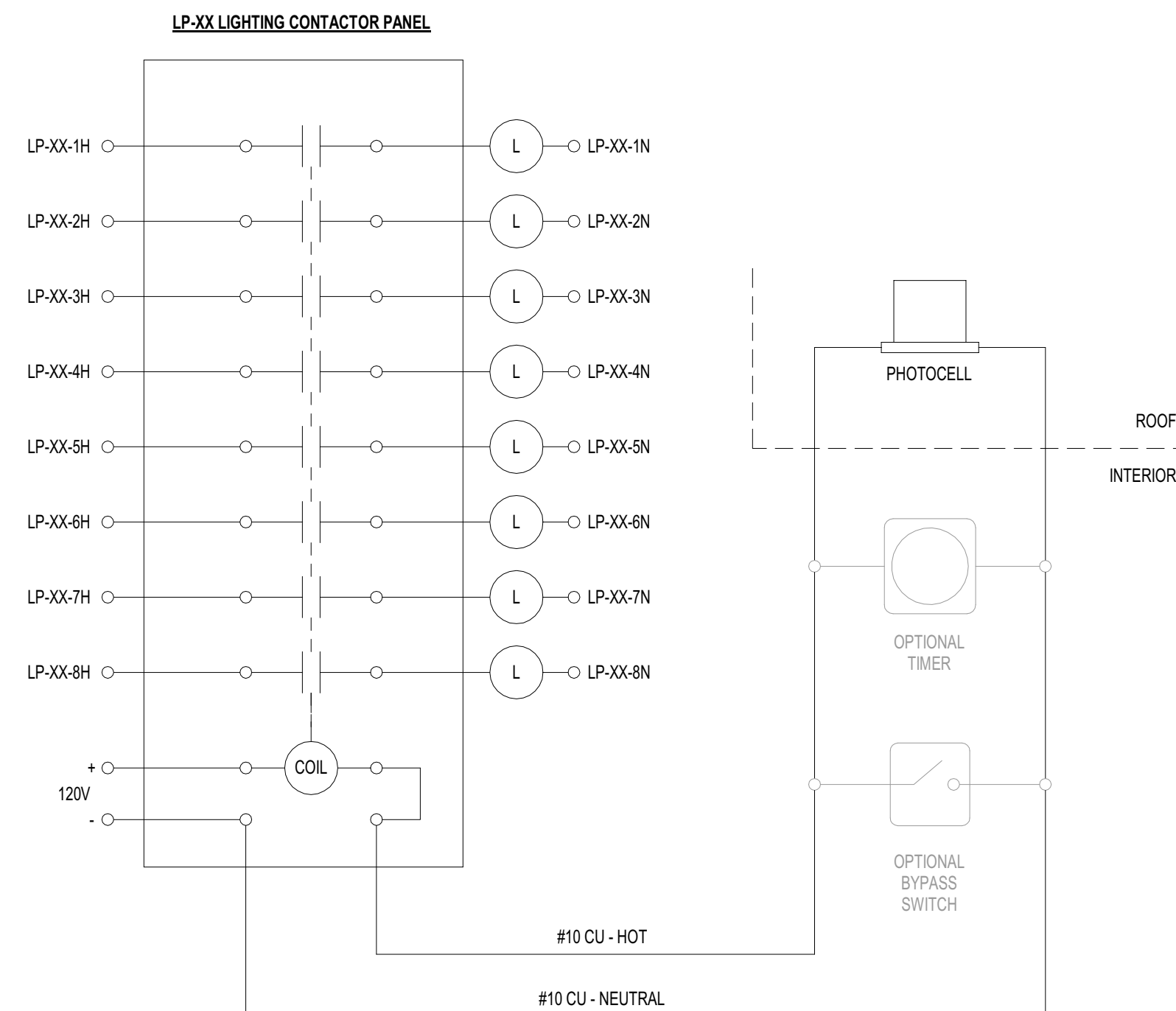


2 LIGHT POLE DETAIL
NTS



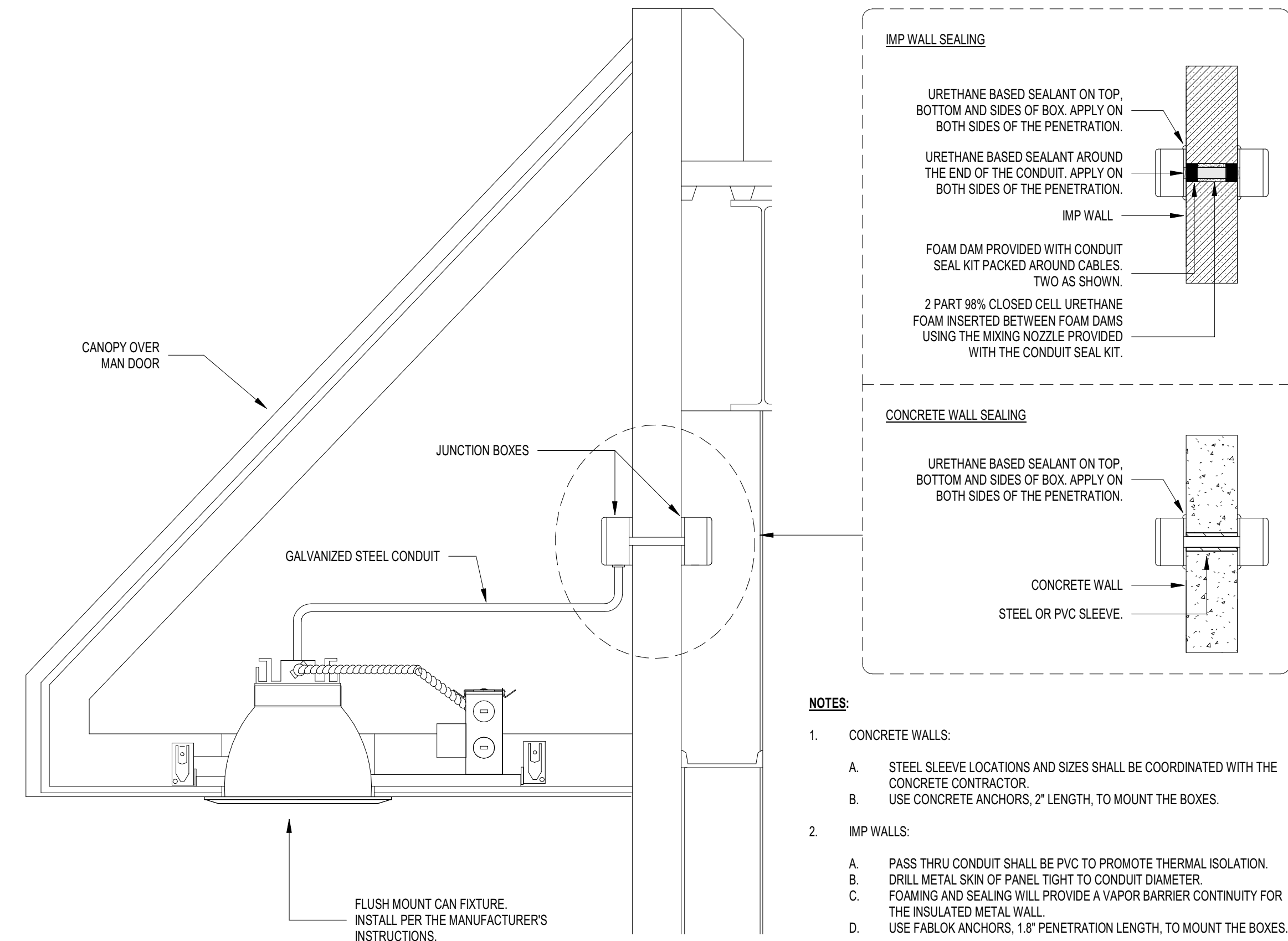
- NOTES:
- EQUIPMENT GROUNDING CONDUCTOR IS NOT SHOWN, BUT IS REQUIRED.
 - THREE PHASE WIRING IS SHOWN ABOVE. SINGLE PHASE WIRING IS THE SAME, BUT EXCLUDES PHASES "Y" AND "Z," AS WELL AS THE SPLICE.

3 LIGHT POLE FUSE WIRING DETAIL
NTS

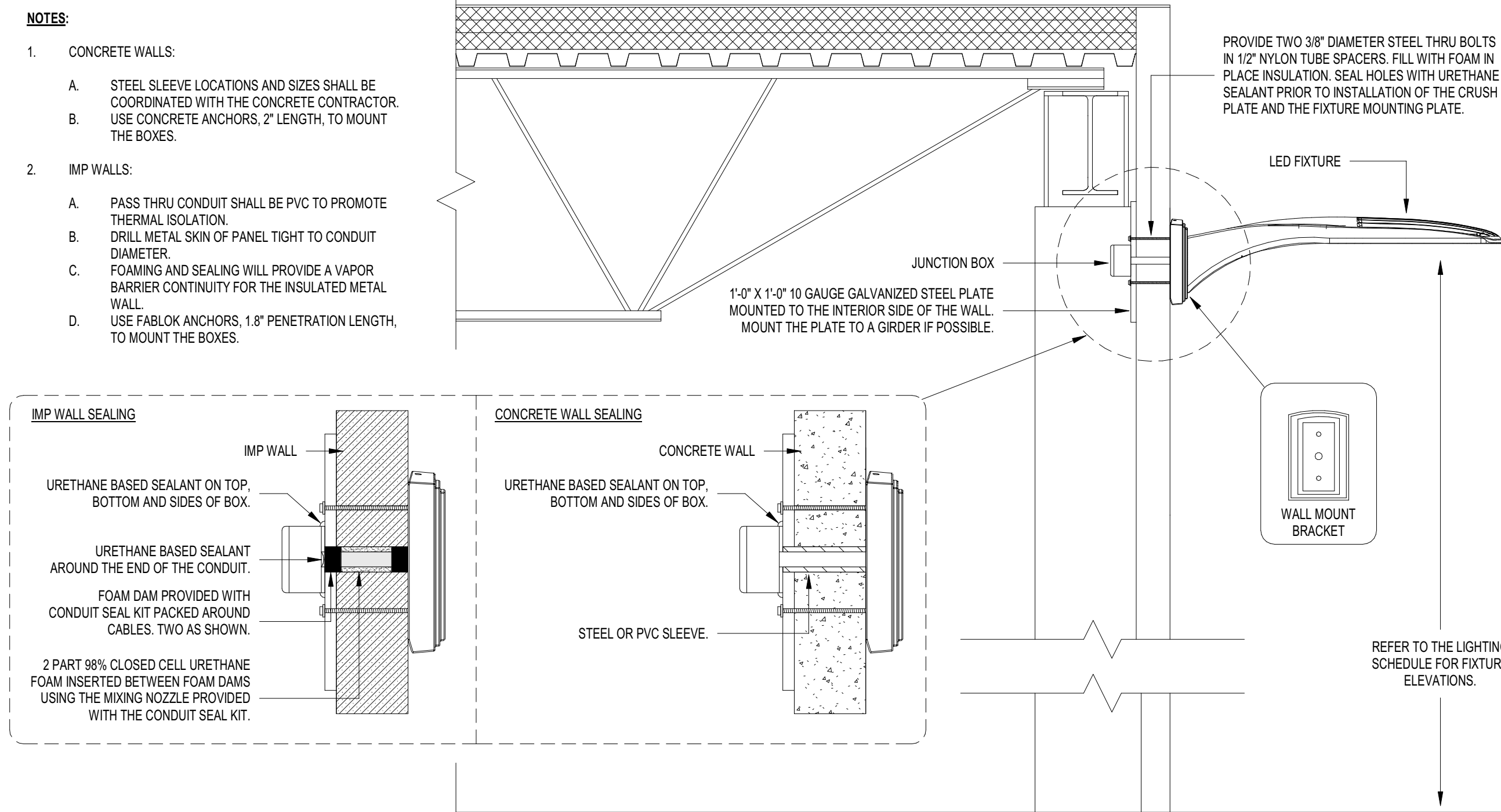


- NOTE(S)
- THE CONTACTOR SHALL BE AN EATON MODEL C30CNE80A0, OR EQUIVALENT.
 - THE PHOTOCELL SHALL BE A TORK MODEL 2002, OR EQUIVALENT.

6 LIGHTING CONTROL - SITE
NTS



4 LIGHT FIXTURE MOUNTING DETAIL - CANOPY
NTS



5 LIGHT FIXTURE MOUNTING DETAIL - EXTERIOR WALL
NTS